

DMCC Coffee Centre

**MADE
FOR
TRADE**

dmcc.ae

The DMCC Coffee Centre is a state-of-the-art facility established in 2019 to provide a wide range of services to the entire coffee value chain, from crop to cup. The first of its kind in the Middle East, DMCC Coffee Centre is situated in the Jebel Ali Free Zone Area (JAFZA) and is a centrally accessible meeting point for global producers and buyers.

DMCC Coffee Centre connects the fast growing and high value consumer markets in the Middle East and Europe, to some of the world's major coffee producing nations such as Brazil, Colombia, Ethiopia, India, Indonesia, Uganda, Vietnam, and more. With a vision to transform Dubai into the new global hub for coffee, DMCC Coffee Centre benefits a wide range of stakeholders including coffee farmers, exporters, traders, roasters and retailers.

The 15,000 sqm temperature-controlled facility comprises storage, value add and commercial space and offers its members a wide range of services including inbound/outbound logistics support, warehousing, roasting, packaging and distribution services. Further, the facility is equipped with a Specialty Coffee Association (SCA) certified training campus that offers professional courses for baristas and consumers alike in the areas of grading, cupping, roasting and brewing.

DMCC Coffee Centre

Warehouse and storage

- 9,600 MT of green coffee can be stored at the centre (equivalent to 500 20ft containers)

Green coffee processing

- Cleaning and de-stoning: 5 MT per hour
- Blending
- Re-bagging
- Vacuum packing

Coffee roasting, grinding, blending and packing

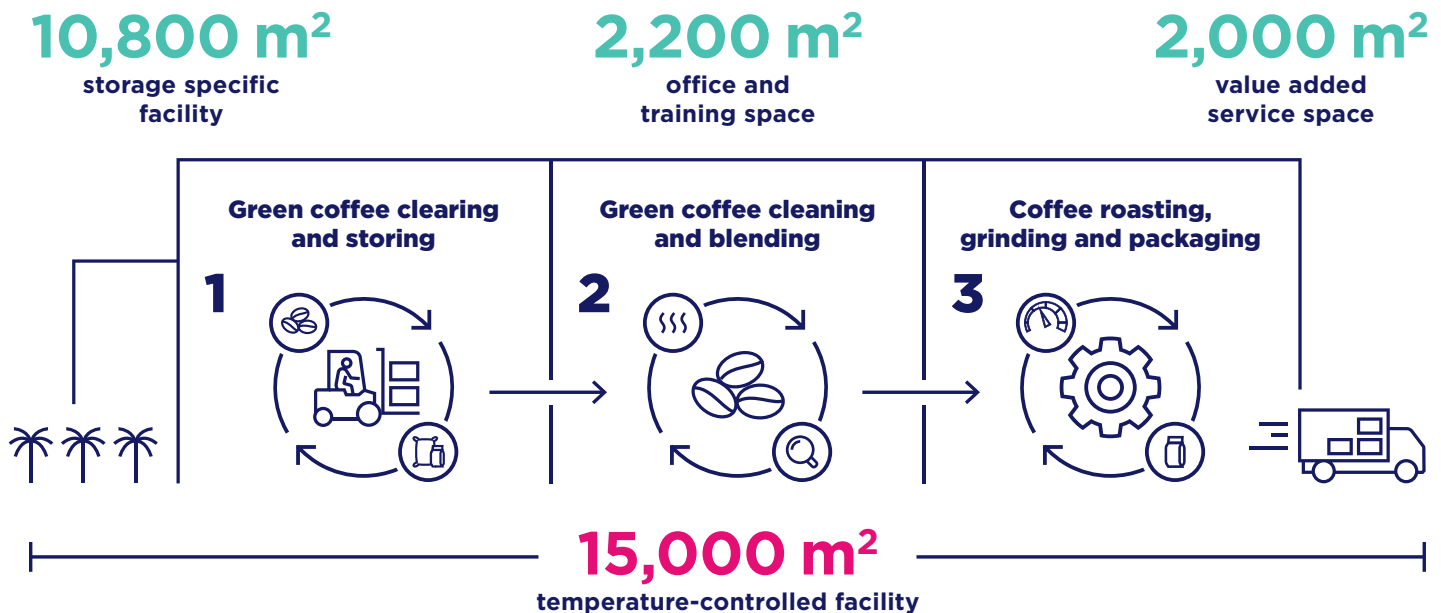
- Coffee roasting
- Post roast blending
- Roasted coffee silo storage for whole beans
- Degassing silo storage for ground coffee

Training and events

- 2,000+ professionals have used the DMCC Coffee Centre training and event facilities to date

Other facts

- GFSI-certified facility
- 70+ green coffee origins
- Export destinations including Africa, Europe, Asia, Australia, and the USA
- Capacity for 3,000 MT of fresh and instant coffee packaging annually
- DMCC Coffee Centre has hundreds of registered members



Facility layout

- 10,800 m² storage specific facility
- 2,000 m² value added service space
- 2,200 m² commercial and training space
- 15,000 m² temperature-controlled facility

Services

- Logistics
- Storing
- Roasting
- Grinding
- Blending
- Packaging
- Distributing

Specialised services

- Sample evaluation
- Quality control
- Cleaning
- Coffee roasting, grinding and blending
- Packaging and re-bagging of green coffee
- Green bean storage at optimal cooled temperatures

Commercial space and activities

- Private fully furnished on-site office space
- Flexi-desk facility
- Freight forwarding and logistics
- White label services
- Fully equipped meeting rooms

Equipment available

- Flexible packaging options for ground and beans
- Packing ground coffee into capsules, filter bags and drip coffee
- Brambati production plant
- Fully equipped training centre
- Fully outfitted roasting lab
- Café and brew bar for product development
- Three fully outfitted cupping rooms with water

SCA certified premier training campus

- Roasting training
- Q and Sensory Lab
- Barista and Brewing Lab

DMCC's Coffee Industry Leaders



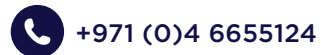
Ahmed Bin Sulayem

Executive Chairman and Chief Executive Officer | DMCC

Ahmed Bin Sulayem is the Executive Chairman and Chief Executive Officer of DMCC and has driven its growth from a start-up of 28 member companies in 2003 to one of the world's leading international business districts in 2024 with over 25,000 members.

Location and contact details

DMCC Coffee Centre
Plot S10814, Street S109
Jebel Ali Free Zone - South
P.O. Box 48800
Dubai, UAE



DMCC. Made for Trade.

For more information, visit www.dmcc.ae.